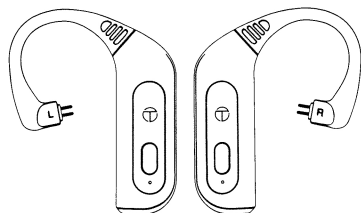


TRN



True Wireless Bluetooth Earphone Module

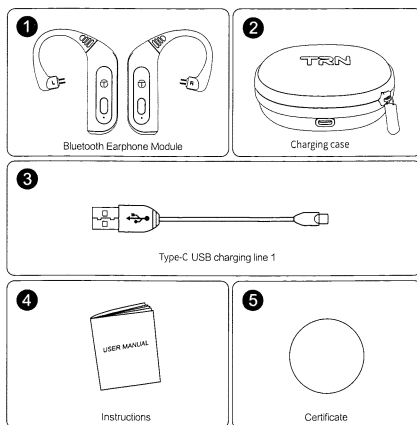
INSTRUCTIONS

Thank you for choosing BT20XS True Wireless Bluetooth Earphone Module. Please read the instructions carefully and keep them for inspection.

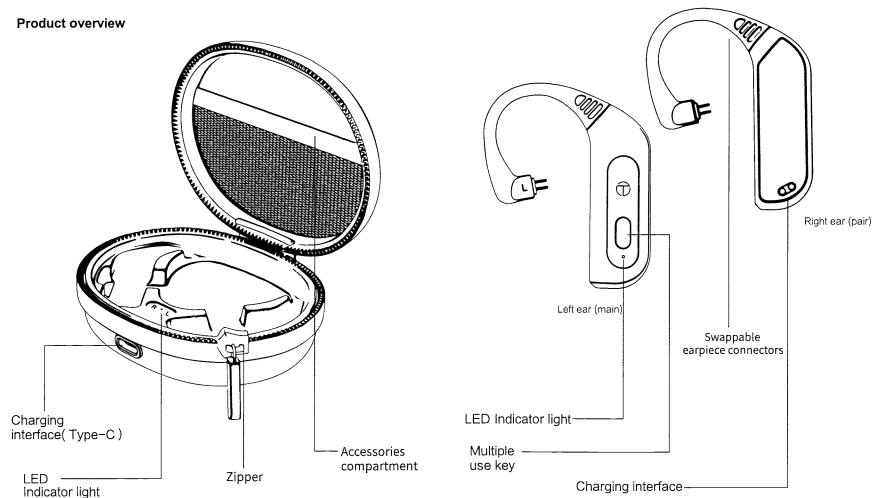
Packaging content

BT20XS

True Wireless Bluetooth Earphone Module



Product overview



Operation Manual

Power on

1. Remove earpieces from the charging case, it will turn on automatically. (charging case must be charged).
2. Long press on the MFB button for 3 seconds to power on.
Voice prompt: "Power On"
Indicator light: Blue LED lights for 1 second.

Pairing mode

Once the left and right earpieces are connected, both earpieces will activate pairing mode. In your device's Bluetooth settings, search for BT30 and choose to pair.
Voice prompt: "Pairing"
Indicator light: red and blue LEDs flash simultaneously.

Previous

Press button 3 times for PREVIOUS track.

Next

Press button 2 times for NEXT track.

Answer a call

During an incoming call, press the left and right earpieces MFB buttons.

Power off

1. Return earpieces to the charging case, it will turn off automatically.
2. Long press on the MFB button for 5 seconds to power off.
Voice prompt: "Power Off"
Indicator light: Red LED lights for 1 second.

Left and right earpieces pairing

Remove from the charging case and both left and right earpieces will pair automatically.
Voice prompt: "beep"

Reset previous paired setting

In pairing mode:
Click 3 times on the main ear to restore the factory settings
It will automatically shut down after restoring the factory settings (need to reboot)
Voice prompt: "Beep" x 2
Indicator light: Red LED lights for 1 second. Once reset, red and blue LEDs flash simultaneously.

End a call

During a call, press the left and right earpieces MFB buttons.

Reject a call

During an incoming call, long press the left and right earpieces MFB buttons for 1 second until you hear a beep.
Voice prompt: "Beep"

Pause / playback

When playing music, press the left and right earpieces MFB buttons to play and pause.

Connect and disconnect from the phone

1. Disconnect from phone.
Voice prompt: "Disconnected pairing"
Indicator light: Red and blue LEDs flash simultaneously.
2. When connected, the earpieces turn off.
Voice prompt: "Power off"
Indicator light: Red LED lights for 1 second.

Battery status display in iOS

The battery capacity of earpieces can be displayed on an iPhone.

Voice assistant (Siri)

1. Long press for 1 second until a beep is heard, then let go to activate Siri.
2. Long press for 1 second until a beep is heard, let go to exit to deactivate Siri.

Revert to connection

1. Connection for both the primary and secondary earpieces remain active for 10 seconds, subsequently powers off automatically after 3 minutes of inactivity.
Voice prompt: "Power Off"
Indicator light: Red and blue LEDs flash simultaneously.
2. Unstable connection
Voice prompt: "Pairing"
Indicator light: Red and blue LEDs flash simultaneously.
3. Abrupted incoming and outgoing calls during standby mode or music listening.
Earpieces with power off within 3 minutes.
Voice prompt: "Disconnected"

WeChat/QQ voice listening/recording

When connected, press WeChat or QQ messenger to listen or to record a message.

Low power warning

When power is lower than 3.3V, a warning will prompt once every 2 minutes.
Voice prompt: "Battery low"
Indicator light: Red LED flashes slowly

Charging

The charging current is 70mA (±5mA).
When charging, the red LED remains on.
Earpieces are turned off during charging.
Indicator light: Red LED lights on.

Auto power off

1. When there is no connection between the designated device and both earpieces for more than 3 minutes.
Voice prompt: "Power off"
Indicator light: Red LED lights for 1 second.
2. When power is lower than 3.05V.
Voice prompt: "Power off"
Indicator light: Red LED lights for 1 second.

Video and gaming audio output

When connected, watch video and play games as per normal.

Fully-charged

It takes approximately 1 to 2 hours of uninterrupted charging to reach full capacity. Blue LED lights for 1 minute after a full-charge is detected.
Indicator light: Blue LED lights on for 1 minute and then off.

Specifications

Bluetooth version: 5.3
Radio frequency range: 2.402MHz to 2.480MHz
Effective range: 15 meters
Bluetooth codec: AAC; SBC
Bluetooth profile: HFP, A2DP, HSP, AV/RCP
Charging times: (Earpieces) 1.5 hours to full-charge, (Charging case) 2 to 3 hours
Earpiece battery capacity: 80mAh per earpiece
Charging case battery capacity: 700mAh
Charging voltage: DC 5V (use current rated 0.5A or higher)
Standby time: at least 180 hours
Auto shut-off: 3 minutes when not connected to a Bluetooth device
Microphone type: 3722 (sensitivity -42db ± 3dB)
Operation temperature: 0 ~ 40 °C
Storage temperature: -10 ~ 50 °C